



INTRODUCTION TO
EX-SDI
BY



eDIGITALDEALS

digital surveillance solutions

Current Market : ***HD-SDI***

- **H**igh **D**efinition **S**erial **D**igital **I**nterface
- Data cable rate of at least 1.485 GHz
- Uncompressed video transfer via Coax
- 1-2 Mega quality at maximum 25/30 fps
- Cable distance of 100-150M (RG. 59)
- Full digital signal
- No Video Loss (Lossless)

***HD-SDI* vs. TVI / CVI / AHD**

HD-SDI

- Resolution : 1 – 2 Mega
- Cable Dist: 100M-200M
- Image Quality: Lossless
- Interference: No
- Signal: Digital
- Latency: Real Time

TVI / AHD / CVI

- Resolution : 1 – 2 Mega
- Cable Dist: 100M-500M
- Image Quality: Degradation
- Interference: Many (Noise)
- Signal: Analog
- Latency: Real Time

What is **EX-SDI** ?

(**Extended** Serial Digital Interface)

EX-SDI



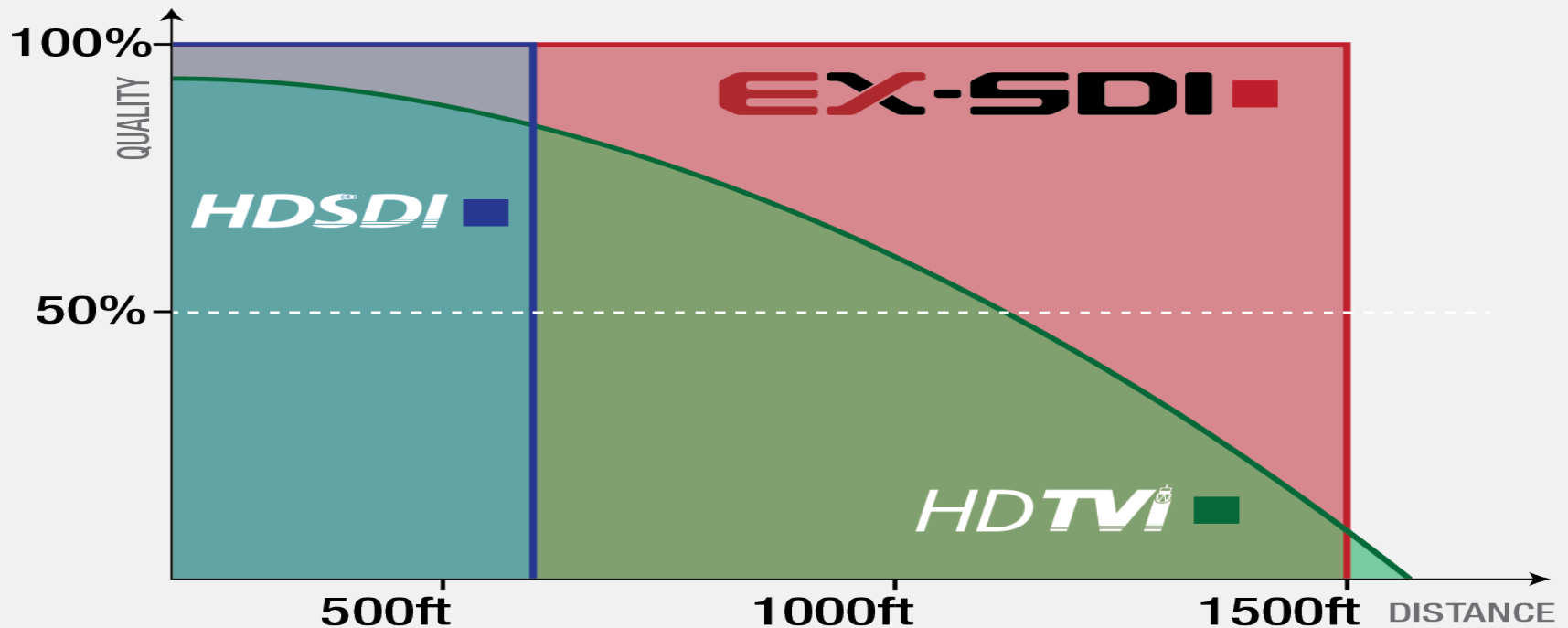
3840 x 2160p : COAXIAL CABLE
HD BALUN

EX-SDI How?

- Compressed Data Transfer by 5 : 1 (V1.0)/
10:1(V2.0)= 270 MHz/135MHz
 - (HD-SDI uncompressed data transfer = 1.485 GHz)
- Reduce speed by 5 times while maintaining best video quality
- Visually lossless in converting the signal (Full Digital System)
- Have a Potential to 4K over Coax

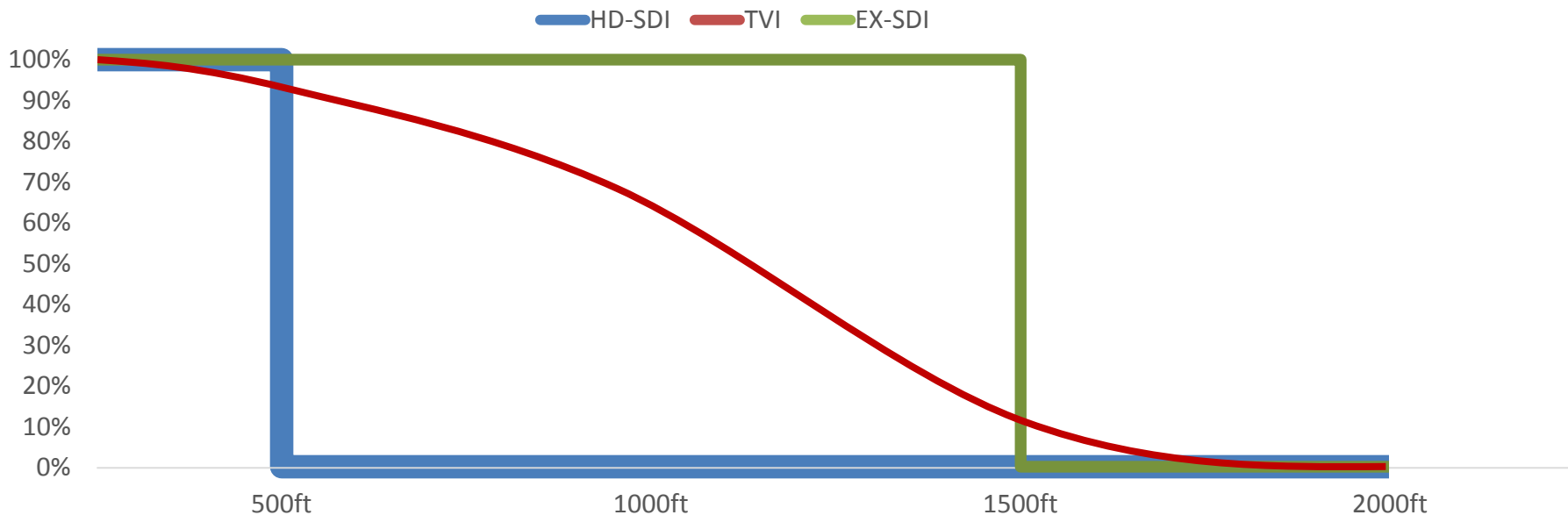
EX-SDI Transmission

- Keeps original image regardless of distance.
- **VLC** : Undetectable to the human eye.



EX-SDI Transmission

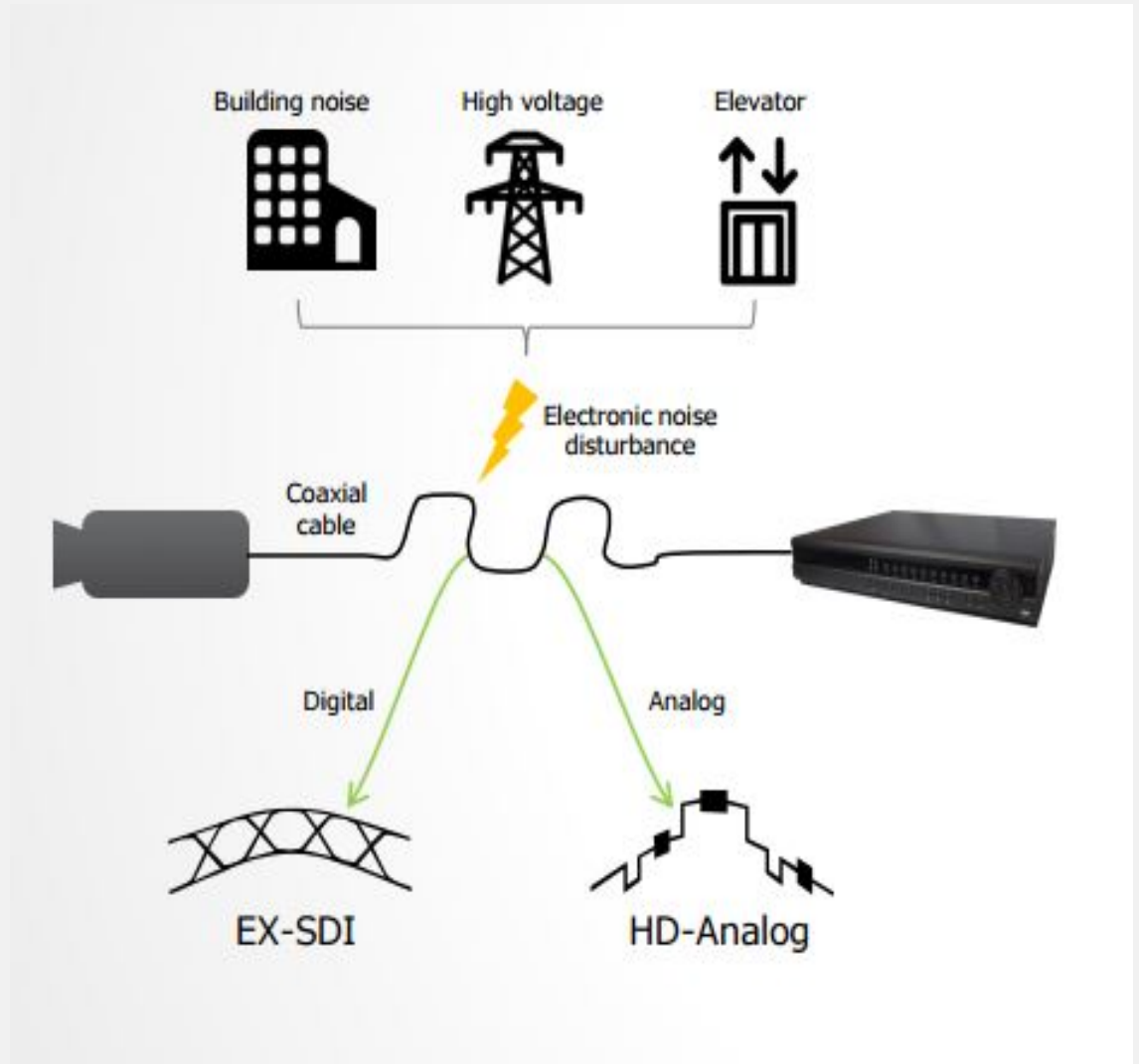
- Keeps original image regardless of distance.
- **Visually Lossless CODEC** : Undetectable to the human eye.



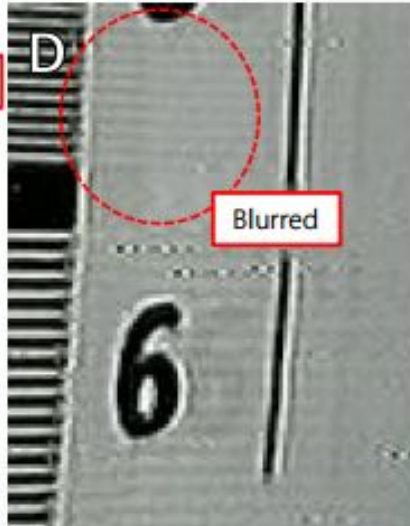
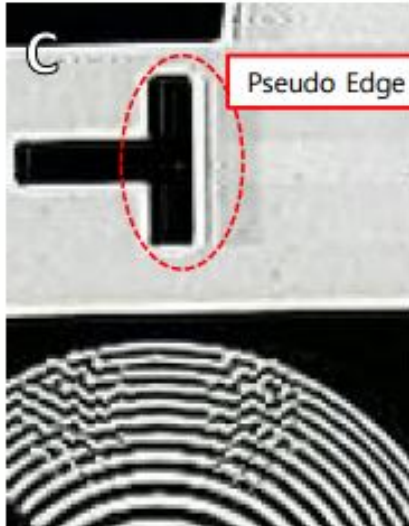
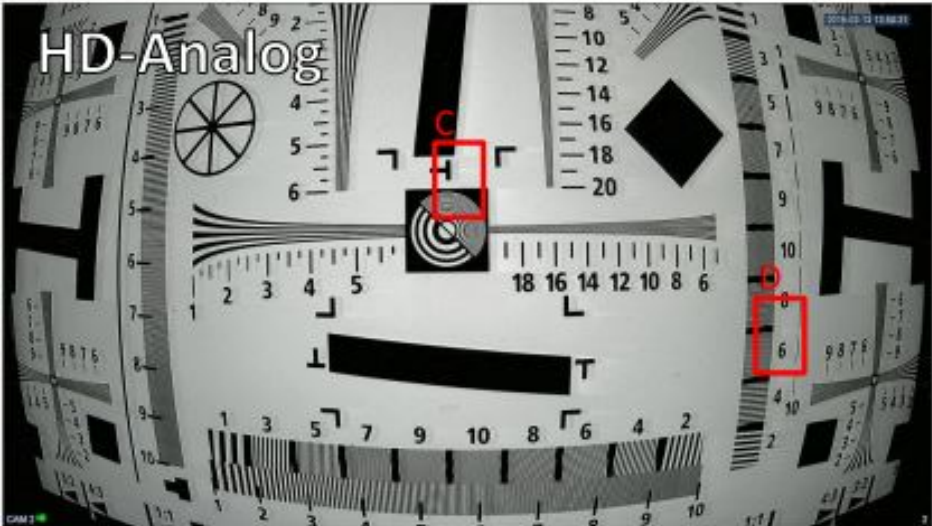
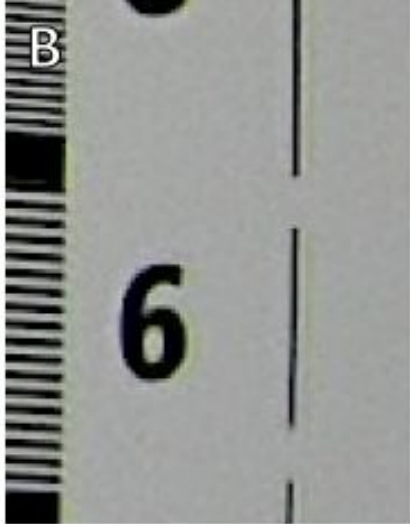
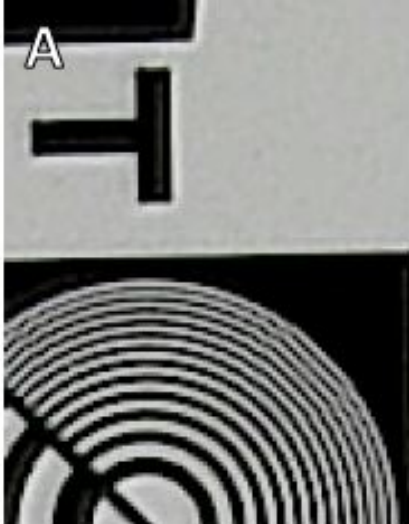
EX-SDI Durability

HD Digital Signal

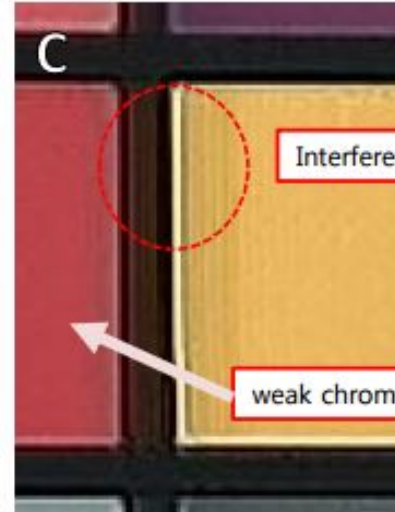
- Resist to Video Degradation
- Reach highest video quality
- Resistant to noise



Comparison – EX-SDI vs. HD Analog



Comparison – EX-SDI vs. HD Analog



EX-SDI Compatibility

- 1) EX-SDI DVR's will work with existing HD-SDI applications.
- 2) Current HD-SDI cameras will work with new EX-SDI DVR but will not work vice versa.
- 3) **EX-SDI** will not work with **TVI** , **AHD** or **CVI**.
- 4) **EX-SDI** will not work with existing analog (**960H**).
But Magic Series will work with 960H.
- 5) **EX-SDI** V2.0 will work with V1.0 but will not work vice versa.(Existing old DVR will not work with new Camera)

EX-SDI Avail. & Pricing

- The Magic DVR will be the first to offer full **PLUS** and **LITE** version for EX-SDI applications.
- **LITE** : 4 , 8 , 16 channel released in November 2015.
- **PLUS**: 4, 8, 16 , 32 channel released in March 2016.
- EX-SDI Cameras from Korea will be released in November 2015.
- ***All pricing for EX-SDI will be cheaper than HD-SDI but higher than TVI. Price difference will be very minimal. (No Exact Pricing Available Yet)***